

930/937 MULCHER

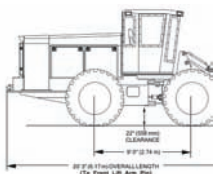


305/375 HP No-Nonsense Mulcher

The Barko series 930/937 Mulcher is designed for the most demanding right-of-way land clearing and site prep applications. The 930/937 is the top mulcher for large commercial and municipal applications. Featuring a powerful, industry-leading 305/375hp diesel engine, a highly maneuverable carrier with heavy-duty hydrostatic drive, and efficient load-sensing hydraulics. The Barko 930/937 has no equal.

- Excellent power, lift and drive capability - uncompromising 305/375 hp carrier.
- Heavy-duty hydrostatic transmission—responsive, easy handling, excellent maneuverability.
- Strong, durable carrier—built to withstand extreme stress and tough terrain.
- Ergonomic work station—all-day operator comfort and efficiency. Absolute best 360° visibility in the industry.
- Superior fuel efficiency—large tank, fill up less often, save time and money.
- High capacity cooling package—extends engine/component life. Operate in hot environments.
- Standard in-cab hydraulic pressure diagnostics.
- Auto-reversing cooling fan.

The standard for mulchers has been re-written—the Barko 930/937 Mulcher does it all.

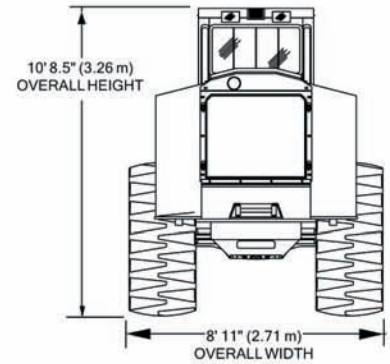
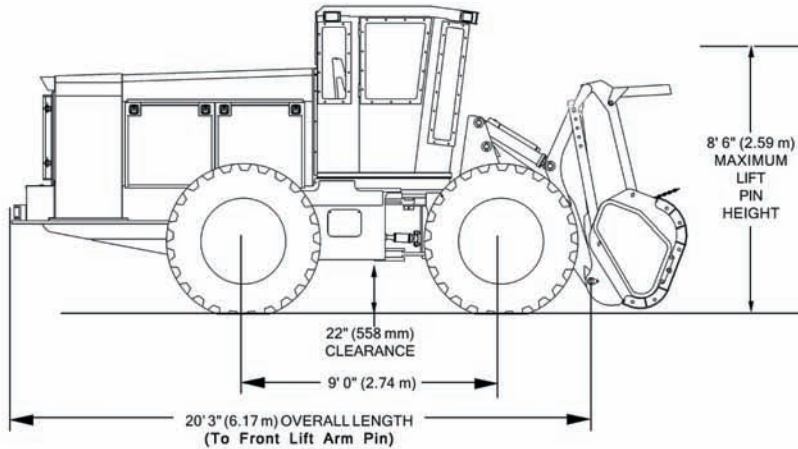


BARKO HYDRAULICS, LLC

One Banks Avenue • Superior, Wisconsin 54880
715.392.5641 • Fax 715.392.3931 • www.Barko.com

BARKO 930/937 MULCHER

STANDARD SPECIFICATIONS & FEATURES



Engine

Make: Cummins
 Model: QSC 8.3 L
 Horsepower: 305 (227 Kw)
 RPM: 2200
 Bore & Stroke: 4.49 x 5.31
 (114 mmx135 mm)

Number of Cylinders: 6
 Electrical System: 12 Volt
 Fuel Tank Capacity: 126 gal (477L)
 Air Cleaner: Dual Element DryType
 Exhaust System: Muffler (with fire wrap)
 Radiator: High Capacity Anti-Clog Type
 (with automatic reversing fan)

Axles

Type: All wheel drive planetary axles.
 Front: Rigid with hydraulic differential lock.
 Rear: Oscillation type with hydraulic differential lock.
 Articulation: 45° with 28L tires.

Hydrostatic transmission

Variable displacement pump and motor with pilot operated foot controls, combined with a two-speed transfer case to provide an ideal combination of torque and speed range.

Wheels and Tires

Standard: (107" Machine Width) 28L - 26 20 ply with 25 x 26 reinforced wheels. Optional: 68x50-32, 23.1-26 10-ply (8' 6" shipping width)

Brake

Service/Emergency: Hydrostatic-dynamic front axle internal wet disc with foot pedal in cab.

Parking

Switch operated control on dash with wet disc brakes, located on drive line at transmission.

Lift/Tilt/Steer Pump:

Variable displacement, load sensing piston pump producing 42 GPM (159 L/min) @ 3,600 PSI (24,821 kPa).

Travel pump:

Variable displacement piston pump producing a maximum of 52 GPM (197 L/min) @ 5000 PSI (34,474 kPa).

Mulcher Drive Pump:

Variable displacement piston pump producing a maximum of 96 GPM (364 L/min) @ 5200 PSI (35,853 kPa). High Pressure Return Filter 290 Theoretical Hydraulic Horsepower.

Filtration system has 33 Micron filters.

87 gallon (329 L) hydraulic reservoir.

Oil Cooler: High capacity intergrated with Radiator and Charge Air Cooler.

Steering

Joystick controlled.
 Turning radius: 15' 9" (4.80 m) outside tires. Larger tires increase turning radius.

Travel Speeds w/28L - 26 tires

Low gear 0-5.0 MPH (0-8.0 kmh)
 High gear 0-13.0 MPH (0-20.9 kmh)

Electrical

12 volt starting system.
 140 amp alternator
 Ignition key

Power view display:

- engine oil pressure
- engine RPM
- engine load %
- hour meter
- engine temperature
- volt meter
- Visual warning system:
 - engine oil pressure
 - engine temperature

Analog Audio/visual warning system:

- hydraulic oil temperature
- low hydraulic oil level
- park brake
- differential lock engaged
- high pressure filter service
- mulcher pump filter service
- drive filter service.
- Fuel level

Operators Cab

Excellent visibility, ergonomically designed layout for operator comfort and ease of control, sound insulation, ROPS, FOPS and OPS certified, defroster, air conditioning, deluxe adjustable

bucket seat with 4 point harness, tinted lexan windows, three front mounted cab lights, two front side mounted cab lights, two rear mounted cab lights, two rear side mounted cab lights, AM/FM radio, cd player, and fire extinguisher. Air Knife on front windshield for dust and debris removal. Sealed and pressurized with cyclonic filter.

Left hand joystick for steering with 5 push buttons.

Right hand joystick for lift and tilt with 5 push buttons.

Buttons for horn, front differential lock, low lock, float on/off, float override, gate, push bar, plus 1 extra button can be arranged to suit the end user.

Pilot operated double foot pedal for travel.

Electronic hydraulic pressure diagnostics on the cab instrument panel

Service Features

Grouped single point remote grease fittings for steering cylinders and axles.

Side panels are lockable and removable.

Brake and transmission side, front and bottom covers are removable for ease of service.

Weight without attachment 30,000 lbs.

Hydraulic Cylinders

	Bore	Rod	Stroke
Lift Cylinders	4" (102mm)	2.5" (63.5mm)	19.13" (486mm)
Tilt Cylinders	4" (102mm)	2.5" (63.5mm)	22.5" (571mm)
Steering Cylinders	3" (76.2mm)	1.75" (44.5mm)	13.0" (330mm)

Optional Equipment

Hydraulic Winch - 20,000 lbs capacity
 AFEX automatic fire suppression system

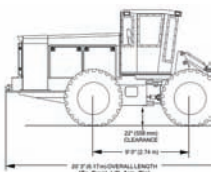
John Deere engine 6090 9.0L 300 HP @ 2200 RPM

Additional Specifications for 937

John Deere 6090 HF 375 HP @ 2200 RPM

Variable Displacement Mulcher Pump
 105 GPM (297 L/min) @ 5500 PSI

Electrical: 200 amp Alternator



BARKO HYDRAULICS, LLC

One Banks Avenue • Superior, Wisconsin 54880
 715.392.5641 • Fax 715.392.3931 • www.Barko.com

BRUSH TECHNOLOGY

www.brush-technology.com
 14375 James Road, Rogers, MN 55374
 Phone: (763) 428-5099 Fax: (763) 428-5051
 seppi@ct-e.com